

NEW JERSEY DEPARTMENT OF THE TREASURY
 DIVISION OF TAXATION
 PROPERTY ADMINISTRATION
 APPROVED AS A TAX MAP PURSUANT TO THE
 PROVISIONS OF CHAPTER 175, LAWS OF 1913, ETC.
 FOR THE DIRECTOR, DIVISION OF TAXATION
 BY *Jan H. Williams* P.E. & L.S.
 LIC. # 15434 MANAGER, ANALYSIS SECTION
 DATE **OCT 1 1977** SERIAL NO. **741**

BOROUGH OF PARAMUS

RIVER

WILD DUCK POND

SHEET 34

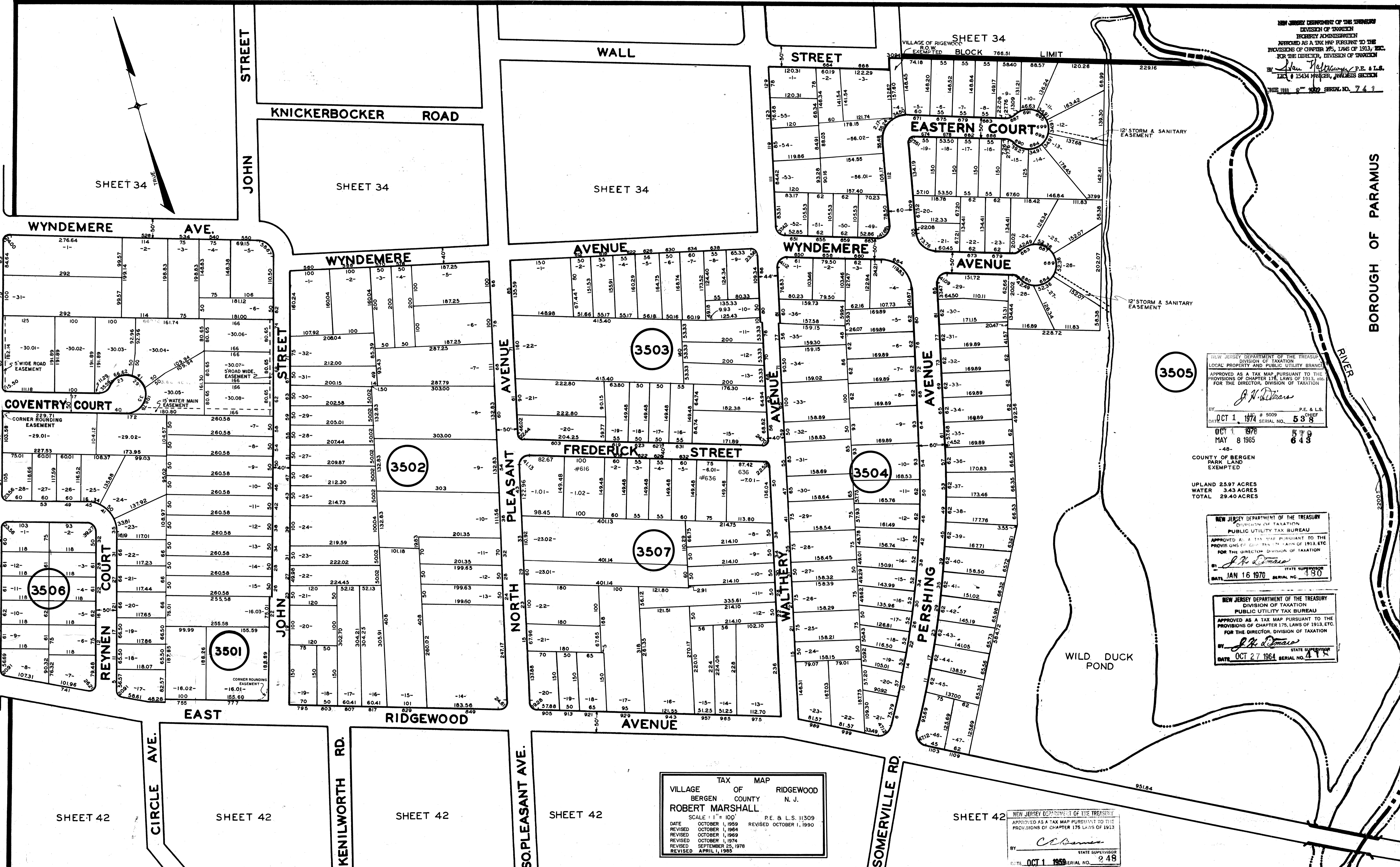
SHEET 34

SHEET 34

SHEET 34

VILLAGE OF RIDGEWOOD
R.O.W.
EXEMPTED

BLOCK 786.51
LIMIT



NEW JERSEY DEPARTMENT OF THE TREASURY
 DIVISION OF TAXATION
 LOCAL PROPERTY AND PUBLIC UTILITY BRANCH
 APPROVED AS A TAX MAP PURSUANT TO THE
 PROVISIONS OF CHAPTER 175, LAWS OF 1913, ETC.
 FOR THE DIRECTOR, DIVISION OF TAXATION
 BY *J. H. Williams* P.E. & L.S.
 CHIEF
 DATE **OCT 1 1977** SERIAL NO. **538**
OCT 1 1978 SERIAL NO. **643**
MAY 8 1985 SERIAL NO. **643**

48
 COUNTY OF BERGEN
 PARK LAND
 EXEMPTED
 UPLAND 25.97 ACRES
 WATER 3.43 ACRES
 TOTAL 29.40 ACRES

NEW JERSEY DEPARTMENT OF THE TREASURY
 DIVISION OF TAXATION
 PUBLIC UTILITY TAX BUREAU
 APPROVED AS A TAX MAP PURSUANT TO THE
 PROVISIONS OF CHAPTER 175, LAWS OF 1913, ETC.
 FOR THE DIRECTOR, DIVISION OF TAXATION
 BY *J. H. Williams* STATE SUPERVISOR
 DATE **JAN 16 1970** SERIAL NO. **180**

NEW JERSEY DEPARTMENT OF THE TREASURY
 DIVISION OF TAXATION
 PUBLIC UTILITY TAX BUREAU
 APPROVED AS A TAX MAP PURSUANT TO THE
 PROVISIONS OF CHAPTER 175, LAWS OF 1913, ETC.
 FOR THE DIRECTOR, DIVISION OF TAXATION
 BY *J. H. Williams* STATE SUPERVISOR
 DATE **OCT 27 1964** SERIAL NO. **418**

TAX MAP
 VILLAGE OF RIDGEWOOD
 BERGEN COUNTY N. J.
 ROBERT MARSHALL
 SCALE: 1" = 100' P.E. & L.S. #1309
 DATE OCTOBER 1, 1959 REVISED OCTOBER 1, 1990
 REVISED OCTOBER 1, 1964
 REVISED OCTOBER 1, 1969
 REVISED OCTOBER 1, 1974
 REVISED SEPTEMBER 25, 1978
 REVISED APRIL 1, 1985

NEW JERSEY DEPARTMENT OF THE TREASURY
 DIVISION OF TAXATION
 PUBLIC UTILITY TAX BUREAU
 APPROVED AS A TAX MAP PURSUANT TO THE
 PROVISIONS OF CHAPTER 175, LAWS OF 1913, ETC.
 BY *C. L. Barnes* STATE SUPERVISOR
 DATE **OCT 1 1959** SERIAL NO. **248**