

NEW JERSEY DEPARTMENT OF THE TREASURY
DIVISION OF TAXATION

APPROVED AS A TAX MAP PURSUANT TO THE
PROVISIONS OF CHAPTER 175, LAWS OF 1913, ETC.
FOR THE DIRECTOR, DIVISION OF TAXATION
BY *John H. ...* P.E. & L.S.
LIC. # 15434 MANAGER, ANALYSIS SECTION
DATE: **MAY 8 1995** SERIAL NO. **741**

SHEET 37

SHEET 36

SHEET 36

DAYTON

NEW JERSEY DEPARTMENT OF THE TREASURY
DIVISION OF TAXATION
LOCAL PROPERTY AND PUBLIC UTILITY BRANCH
APPROVED AS A TAX MAP PURSUANT TO THE
PROVISIONS OF CHAPTER 175, LAWS OF 1913, ETC.
FOR THE DIRECTOR, DIVISION OF TAXATION
BY *J. N. ...* P.E. & L.S.
LIC. # 5009 CHIEF
DATE: **OCT 1 1974** SERIAL NO. **538**

WALTON ST.

DEDICATED TO THE
COUNTY OF BERGEN
AS A R.O.W. FOR ROAD
WIDENING PURPOSES

SHEET 37

UNION ST.

SHEET 39

SHEET 41

SHEET 41

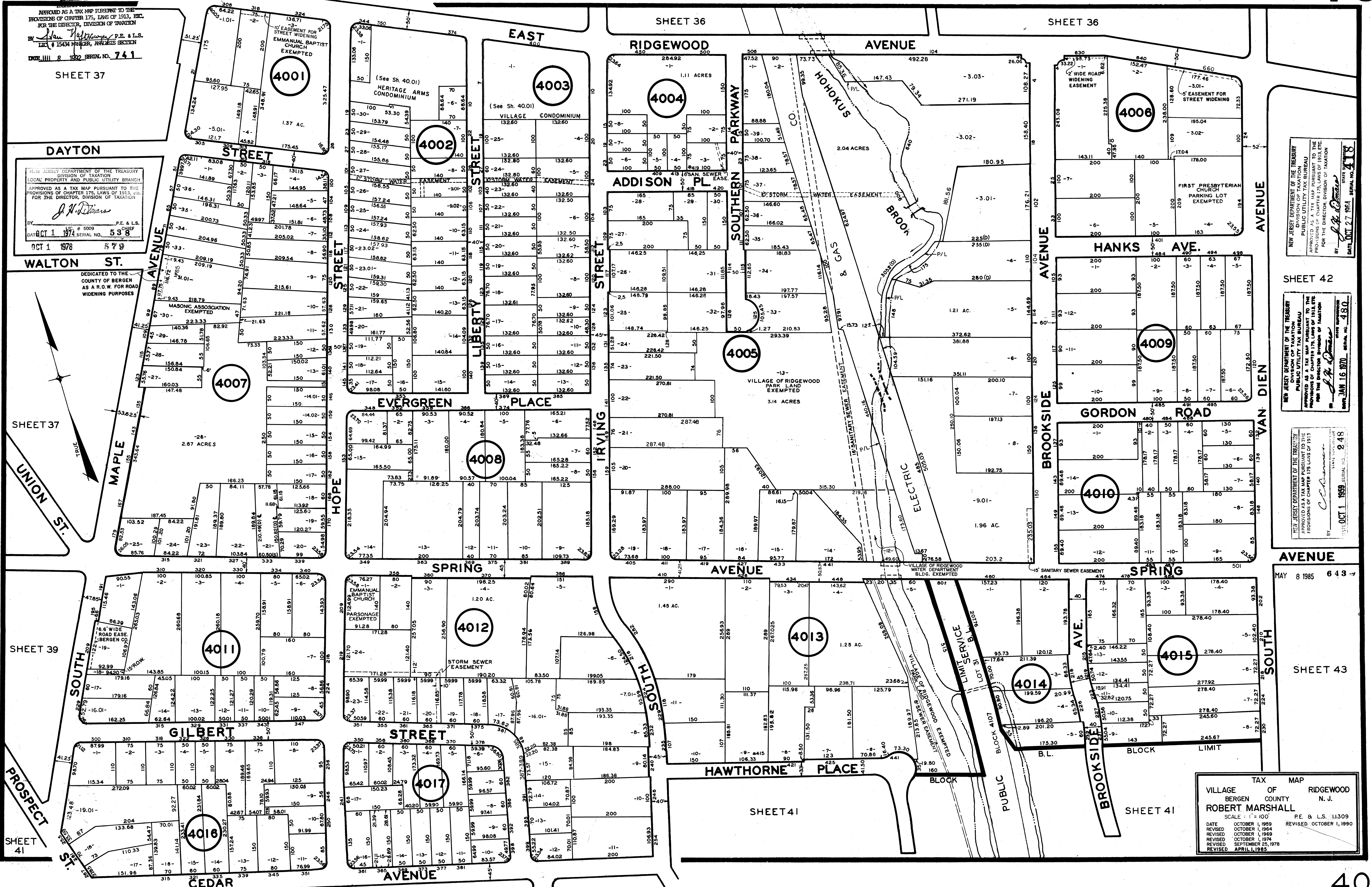
SHEET 41

SHEET 41

SHEET 43

MAY 8 1985 643

SHEET 42



NEW JERSEY DEPARTMENT OF THE TREASURY
DIVISION OF TAXATION
PUBLIC UTILITY TAX BUREAU
APPROVED AS A TAX MAP PURSUANT TO THE
PROVISIONS OF CHAPTER 175, LAWS OF 1913, ETC.
FOR THE DIRECTOR, DIVISION OF TAXATION
BY *J. P. ...* P.E. & L.S.
DATE: **OCT 27 1984** SERIAL NO. **418**

NEW JERSEY DEPARTMENT OF THE TREASURY
DIVISION OF TAXATION
PUBLIC UTILITY TAX BUREAU
APPROVED AS A TAX MAP PURSUANT TO THE
PROVISIONS OF CHAPTER 175, LAWS OF 1913, ETC.
FOR THE DIRECTOR, DIVISION OF TAXATION
BY *J. P. ...* P.E. & L.S.
DATE: **JAN 16 1970** SERIAL NO. **480**

NEW JERSEY DEPARTMENT OF THE TREASURY
DIVISION OF TAXATION
PUBLIC UTILITY TAX BUREAU
APPROVED AS A TAX MAP PURSUANT TO THE
PROVISIONS OF CHAPTER 175, LAWS OF 1913, ETC.
FOR THE DIRECTOR, DIVISION OF TAXATION
BY *J. P. ...* P.E. & L.S.
DATE: **OCT 1 1959** SERIAL NO. **248**

TAX MAP
VILLAGE OF RIDGEWOOD
BERGEN COUNTY N. J.
ROBERT MARSHALL
SCALE: 1" = 100'
DATE: **OCTOBER 1, 1959** P.E. & L.S. **11309**
REVISED: **OCTOBER 1, 1964** REVISED: **OCTOBER 1, 1968**
REVISED: **OCTOBER 1, 1969** REVISED: **OCTOBER 1, 1974**
REVISED: **SEPTEMBER 25, 1978**
REVISED: **APRIL 1, 1995**