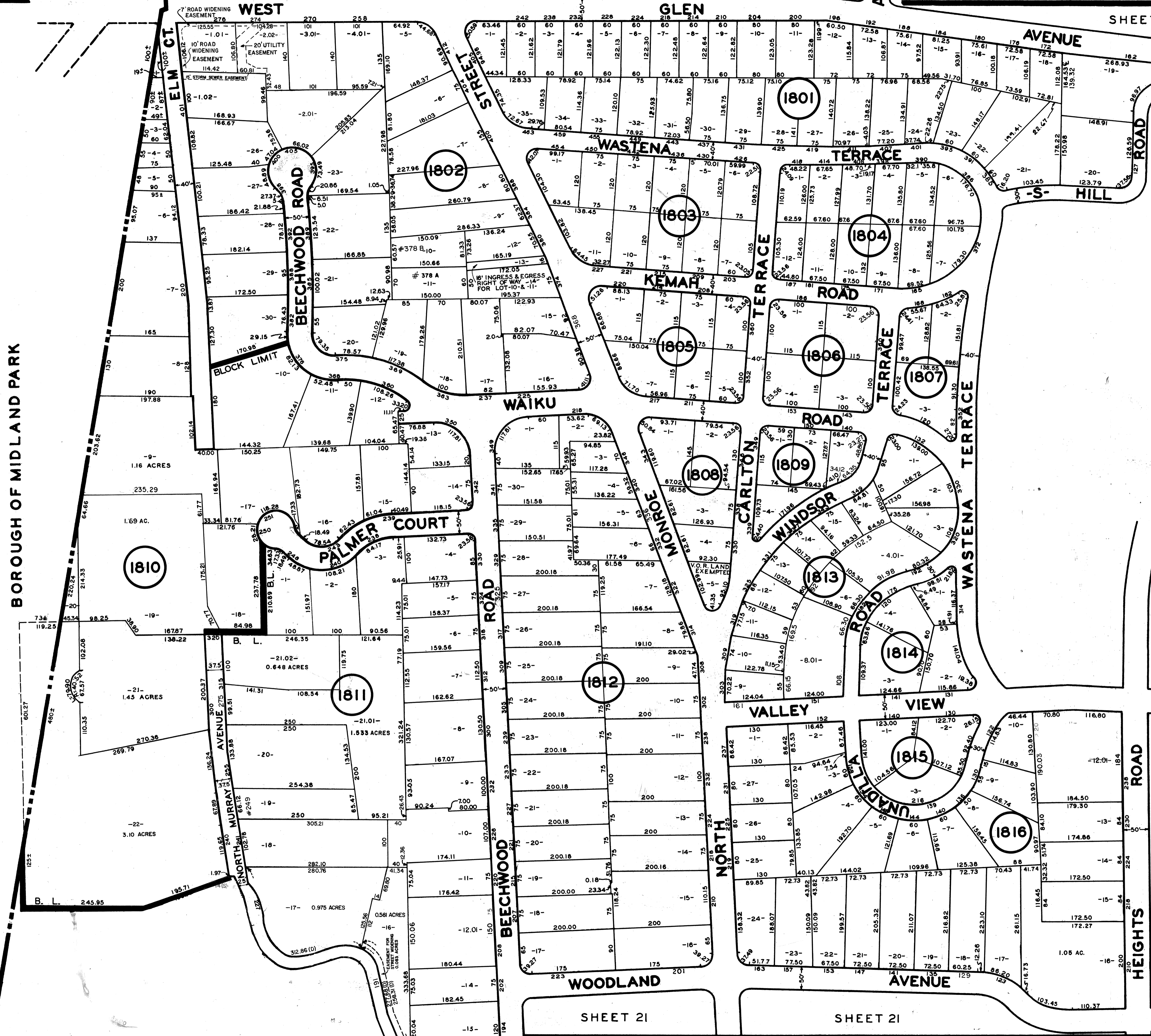


BOROUGH OF MIDLAND PARK



SHEET 16

SHEET 15

SHEET 19

NEW JERSEY DEPARTMENT OF THE TREASURY
 DIVISION OF TAXATION
 LOCAL PROPERTY AND PUBLIC UTILITY TAX BRANCH
 APPROVED AS A TAX MAP PURSUANT TO THE
 PROVISIONS OF CHAPTER 175, LAWS OF 1913, ETC.
 FOR THE DIRECTOR, DIVISION OF TAXATION
J. H. Diars
 BY: P.E. & L.S. CHIEF
 DATE: OCT 1 1974 # 5009 SERIAL NO. 538
 OCT 1 1974 579
 MAY 8 1985 643

NEW JERSEY DEPARTMENT OF THE TREASURY
 DIVISION OF TAXATION
 PUBLIC UTILITY TAX BUREAU
 APPROVED AS A TAX MAP PURSUANT TO THE
 PROVISIONS OF CHAPTER 175, LAWS OF 1913, ETC.
 FOR THE DIRECTOR, DIVISION OF TAXATION
J. H. Diars
 BY: STATE SUPERVISOR
 DATE: OCT 27 1964 SERIAL NO. 418

NEW JERSEY DEPARTMENT OF THE TREASURY
 DIVISION OF TAXATION
 PUBLIC UTILITY TAX BUREAU
 APPROVED AS A TAX MAP PURSUANT TO THE
 PROVISIONS OF CHAPTER 175, LAWS OF 1913, ETC.
 FOR THE DIRECTOR, DIVISION OF TAXATION
J. H. Diars
 BY: STATE SUPERVISOR
 DATE: JAN 16 1970 SERIAL NO. 430

NEW JERSEY DEPARTMENT OF THE TREASURY
 DIVISION OF TAXATION
 APPROVED AS A TAX MAP PURSUANT TO THE
 PROVISIONS OF CHAPTER 175, LAWS OF 1913
C. Barnes
 BY: STATE SUPERVISOR
 DATE: OCT 1 1959 SERIAL NO. 248

TAX MAP
 VILLAGE OF RIDGEWOOD
 BERGEN COUNTY N. J.
 ROBERT MARSHALL
 SCALE: 1" = 100'
 DATE: OCTOBER 1, 1969 REVISOR: P.E. & L.S. #1309
 REVISED: OCTOBER 1, 1964
 REVISED: OCTOBER 1, 1969
 REVISED: OCTOBER 1, 1974
 REVISED: SEPTEMBER 25, 1978
 REVISED: APRIL 1, 1985

NEW JERSEY DEPARTMENT OF THE TREASURY
 DIVISION OF TAXATION
 PROPERTY ADMINISTRATION
 APPROVED AS A TAX MAP PURSUANT TO THE
 PROVISIONS OF CHAPTER 175, LAWS OF 1913, ETC.
 FOR THE DIRECTOR, DIVISION OF TAXATION
Alan Valicunas P.E. & L.S.
 DATE: JUL 8 1982 SERIAL NO. 741

SHEET 21

SHEET 21

SHEET 21