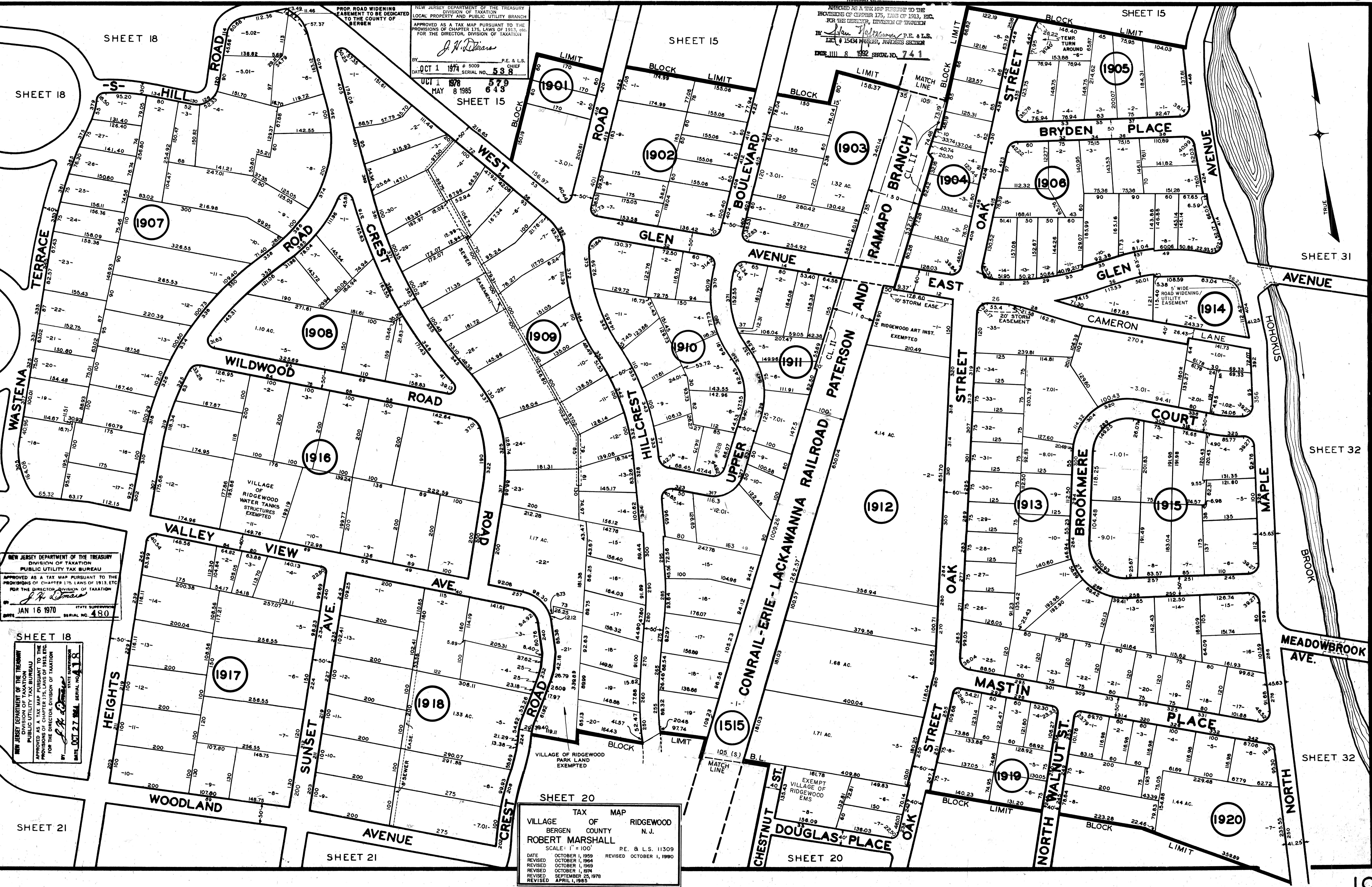


NEW JERSEY DEPARTMENT OF THE TREASURY
DIVISION OF TAXATION

APPROVED AS A TAX MAP PURSUANT TO THE PROVISIONS OF CHAPTER 175, LAWS OF 1913, ETC. FOR THE DIRECTOR, DIVISION OF TAXATION
BY *John J. ...* P.E. & L.S.
DATE 11/18/82 SERIAL NO. 741

NEW JERSEY DEPARTMENT OF THE TREASURY
DIVISION OF TAXATION
LOCAL PROPERTY AND PUBLIC UTILITY BRANCH
APPROVED AS A TAX MAP PURSUANT TO THE PROVISIONS OF CHAPTER 175, LAWS OF 1913, ETC. FOR THE DIRECTOR, DIVISION OF TAXATION
BY *J. N. ...* P.E. & L.S.
DATE OCT 1 1974 # 5009 SERIAL NO. 538
DATE MAY 8 1985 # 579 SERIAL NO. 643



NEW JERSEY DEPARTMENT OF THE TREASURY
DIVISION OF TAXATION
PUBLIC UTILITY TAX BUREAU
APPROVED AS A TAX MAP PURSUANT TO THE PROVISIONS OF CHAPTER 175, LAWS OF 1913, ETC. FOR THE DIRECTOR, DIVISION OF TAXATION
BY *J. N. ...*
DATE JAN 16 1970 SERIAL NO. 480

NEW JERSEY DEPARTMENT OF THE TREASURY
DIVISION OF TAXATION
PUBLIC UTILITY TAX BUREAU
APPROVED AS A TAX MAP PURSUANT TO THE PROVISIONS OF CHAPTER 175, LAWS OF 1913, ETC. FOR THE DIRECTOR, DIVISION OF TAXATION
BY *J. N. ...*
DATE OCT 27 1984 SERIAL NO. 418

SHEET 20
TAX MAP
VILLAGE OF RIDGEWOOD
BERGEN COUNTY N. J.
ROBERT MARSHALL
SCALE: 1" = 100'
DATE OCTOBER 1, 1959 REVISION OCTOBER 1, 1964
REVISED OCTOBER 1, 1969
REVISED OCTOBER 1, 1974
REVISED SEPTEMBER 25, 1978
REVISED APRIL 1, 1985

SHEET 31

SHEET 32

SHEET 32