

NEW JERSEY DEPARTMENT OF THE TREASURY
 DIVISION OF TAXATION
 PROPERTY ADMINISTRATION
 APPROVED AS A TAX MAP PURSUANT TO THE
 PROVISIONS OF CHAPTER 175, LAWS OF 1913, ETC.
 FOR THE DIRECTOR, DIVISION OF TAXATION
 BY *J. H. O'Donnell*, P.E. & L.S.
 DATE **JUL 8 1992** SERIAL NO. **7449**

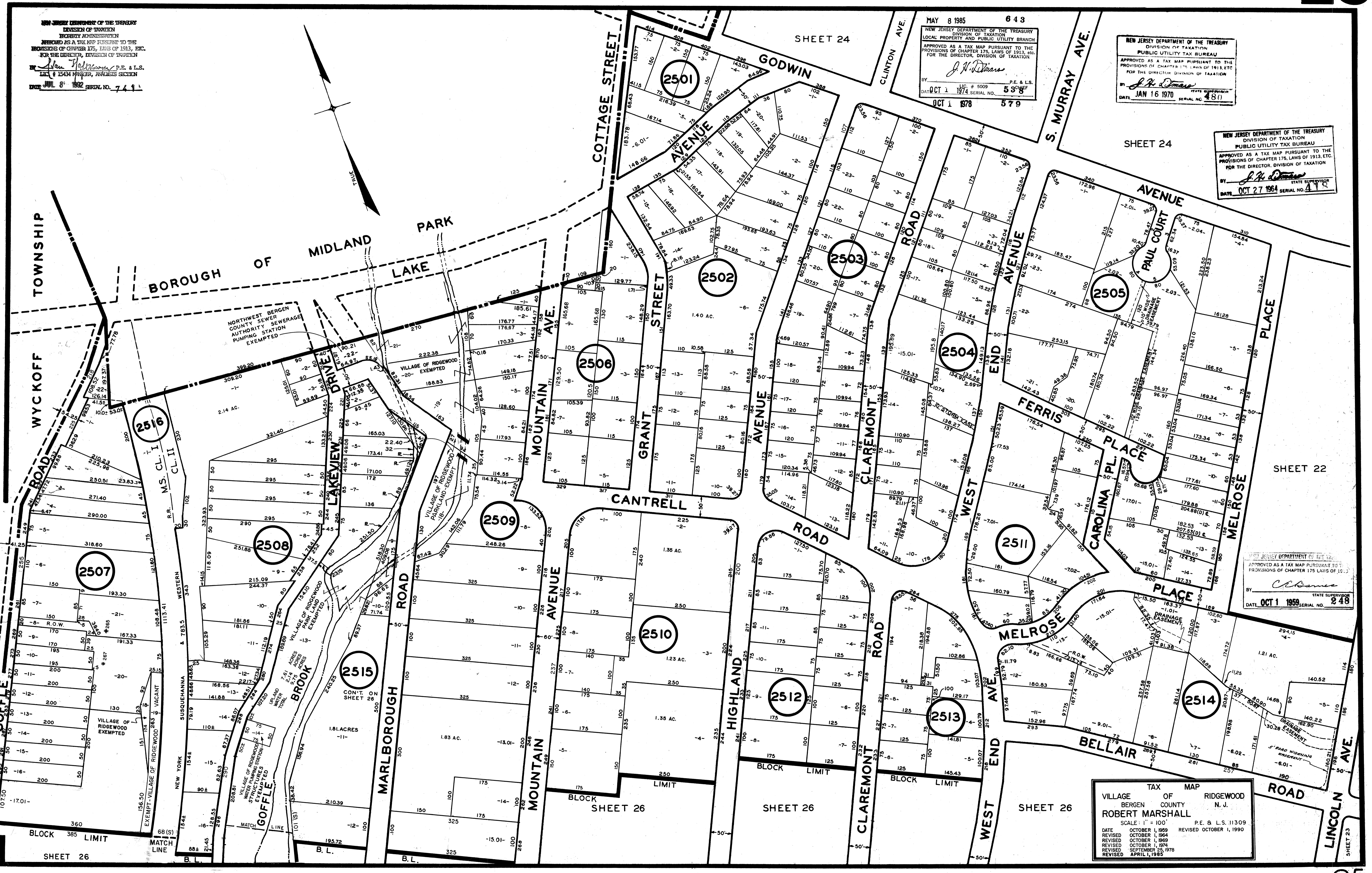
MAY 8 1985 643
 NEW JERSEY DEPARTMENT OF THE TREASURY
 DIVISION OF TAXATION
 LOCAL PROPERTY AND PUBLIC UTILITY BRANCH
 APPROVED AS A TAX MAP PURSUANT TO THE
 PROVISIONS OF CHAPTER 175, LAWS OF 1913, ETC.
 FOR THE DIRECTOR, DIVISION OF TAXATION
 BY *J. H. O'Donnell*, P.E. & L.S.
 DATE **OCT 1 1974** SERIAL NO. **538**
OCT 1 1978 579

NEW JERSEY DEPARTMENT OF THE TREASURY
 DIVISION OF TAXATION
 PUBLIC UTILITY TAX BUREAU
 APPROVED AS A TAX MAP PURSUANT TO THE
 PROVISIONS OF CHAPTER 175, LAWS OF 1913, ETC.
 FOR THE DIRECTOR, DIVISION OF TAXATION
 BY *J. H. O'Donnell*, STATE SUPERVISOR
 DATE **JAN 16 1970** SERIAL NO. **480**

NEW JERSEY DEPARTMENT OF THE TREASURY
 DIVISION OF TAXATION
 PUBLIC UTILITY TAX BUREAU
 APPROVED AS A TAX MAP PURSUANT TO THE
 PROVISIONS OF CHAPTER 175, LAWS OF 1913, ETC.
 FOR THE DIRECTOR, DIVISION OF TAXATION
 BY *J. H. O'Donnell*, STATE SUPERVISOR
 DATE **OCT 27 1964** SERIAL NO. **478**

NEW JERSEY DEPARTMENT OF THE TREASURY
 DIVISION OF TAXATION
 APPROVED AS A TAX MAP PURSUANT TO THE
 PROVISIONS OF CHAPTER 175, LAWS OF 1913, ETC.
 FOR THE DIRECTOR, DIVISION OF TAXATION
 BY *C. O'Shea*, STATE SUPERVISOR
 DATE **OCT 1 1959** SERIAL NO. **248**

TAX MAP
 VILLAGE OF RIDGEWOOD
 BERGEN COUNTY N. J.
 ROBERT MARSHALL
 SCALE: 1" = 100'
 DATE OCTOBER 1, 1969 P.E. & L.S. 11309
 REVISED OCTOBER 1, 1964
 REVISED OCTOBER 1, 1969
 REVISED OCTOBER 1, 1974
 REVISED SEPTEMBER 25, 1978
 REVISED APRIL 1, 1985



SHEET 22

SHEET 26

SHEET 26

SHEET 26