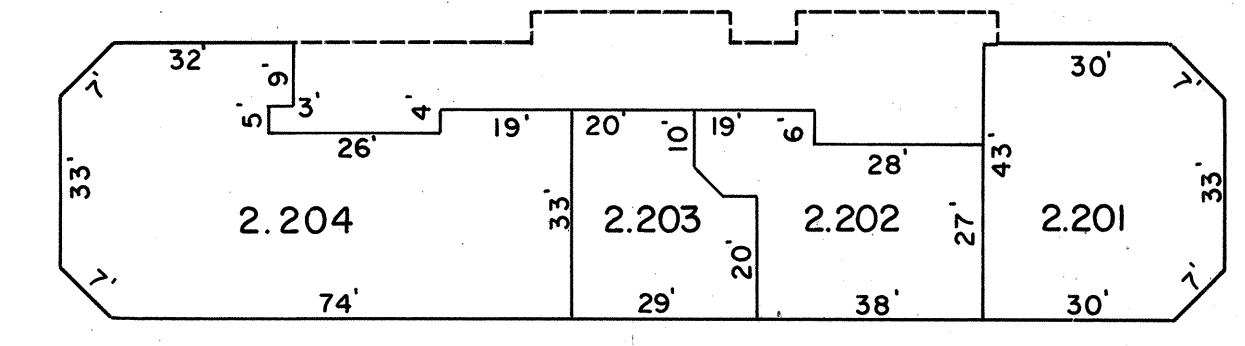
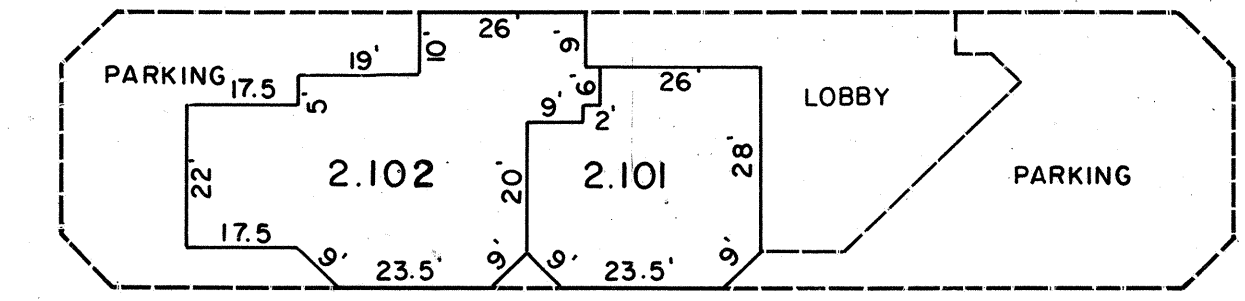


THIRD FLOOR
3 UNITS



SECOND FLOOR
4 UNITS



FIRST FLOOR
2 UNITS

NEW JERSEY DEPARTMENT OF THE TREASURY
DIVISION OF TAXATION
PROPERTY ADMINISTRATION
RECORDED AS A TAX MAP PURSUANT TO THE
PROVISIONS OF CHAPTER 175, LEGIS OF 1913, ETC.
FOR THE DIRECTOR, DIVISION OF TAXATION
BY *Alan Halperin*, P.E. & L.S.
LIC. # 15434 ENGINEER, ANGLIS SECTION
DATE JUL 8TH 1992 SERIAL NO. 749

TAX MAP
VILLAGE OF RIDGEWOOD
BERGEN COUNTY N.J.
DANIEL M. DUNN L.S. 33098
DATE OCTOBER 1, 1990
SCALE: 1" = 30'