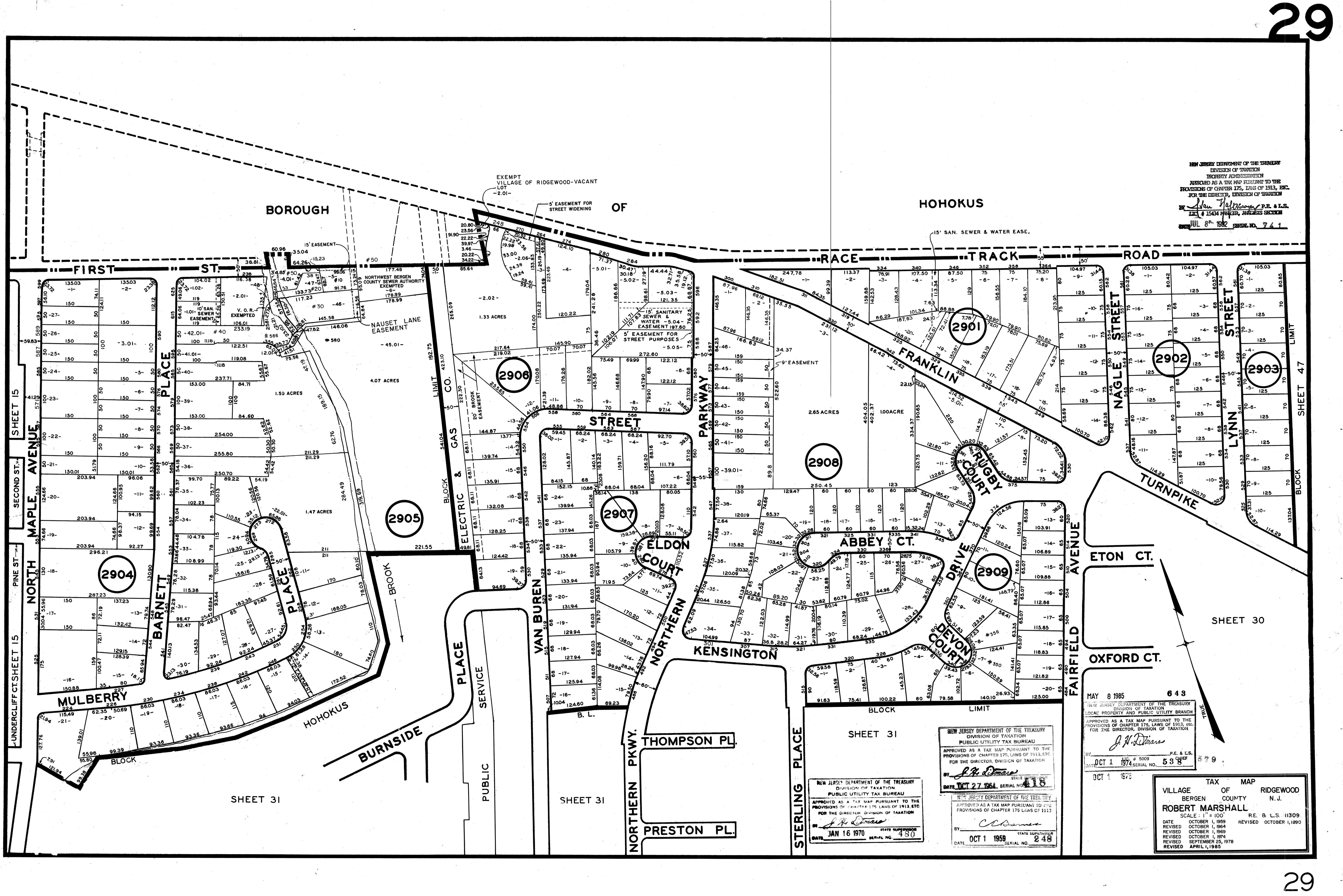


NEW JERSEY DEPARTMENT OF THE TREASURY  
 DIVISION OF TAXATION  
 PROPERTY ADMINISTRATION  
 APPROVED AS A TAX MAP PURSUANT TO THE  
 PROVISIONS OF CHAPTER 175, LAWS OF 1913, ETC.  
 FOR THE DIRECTOR, DIVISION OF TAXATION  
 BY *J. H. O'Donnell* P.E. & L.S.  
 LIC. # 15434 MANAGER, ANALYSIS SECTION  
 JUL 8 1974 SERIAL NO. 741



MAY 8 1985 643  
 NEW JERSEY DEPARTMENT OF THE TREASURY  
 DIVISION OF TAXATION  
 LOCAL PROPERTY AND PUBLIC UTILITY BRANCH  
 APPROVED AS A TAX MAP PURSUANT TO THE  
 PROVISIONS OF CHAPTER 175, LAWS OF 1913, ETC.  
 FOR THE DIRECTOR, DIVISION OF TAXATION  
 BY *J. H. O'Donnell* P.E. & L.S.  
 DATE OCT 1 1974 SERIAL NO. 538  
 OCT 1 1973

NEW JERSEY DEPARTMENT OF THE TREASURY  
 DIVISION OF TAXATION  
 PUBLIC UTILITY TAX BUREAU  
 APPROVED AS A TAX MAP PURSUANT TO THE  
 PROVISIONS OF CHAPTER 175, LAWS OF 1913, ETC.  
 FOR THE DIRECTOR, DIVISION OF TAXATION  
 BY *J. H. O'Donnell* P.E. & L.S.  
 DATE JAN 16 1970 SERIAL NO. 480

NEW JERSEY DEPARTMENT OF THE TREASURY  
 DIVISION OF TAXATION  
 PUBLIC UTILITY TAX BUREAU  
 APPROVED AS A TAX MAP PURSUANT TO THE  
 PROVISIONS OF CHAPTER 175, LAWS OF 1913, ETC.  
 FOR THE DIRECTOR, DIVISION OF TAXATION  
 BY *J. H. O'Donnell* P.E. & L.S.  
 DATE OCT 1 1959 SERIAL NO. 248

TAX MAP  
 VILLAGE OF RIDGEWOOD  
 BERGEN COUNTY N.J.  
 ROBERT MARSHALL  
 SCALE: 1" = 100'  
 RE: 8 L.S. 11309  
 DATE OCTOBER 1, 1969 REVISED OCTOBER 1, 1990  
 REVISIONS:  
 OCTOBER 1, 1964  
 OCTOBER 1, 1969  
 OCTOBER 1, 1974  
 SEPTEMBER 25, 1978  
 APRIL 1, 1985