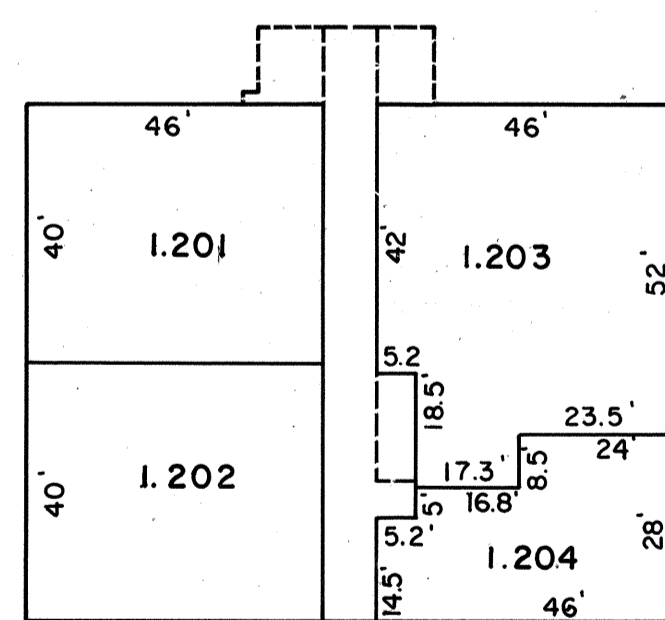
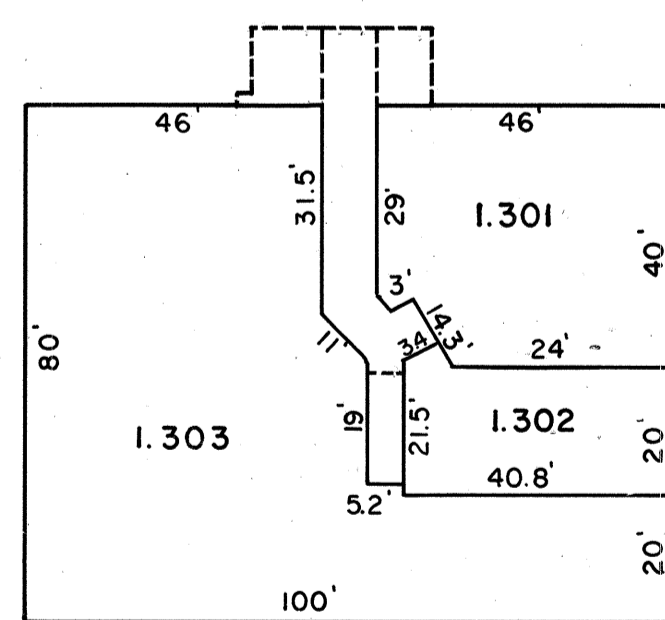


FIRST FLOOR

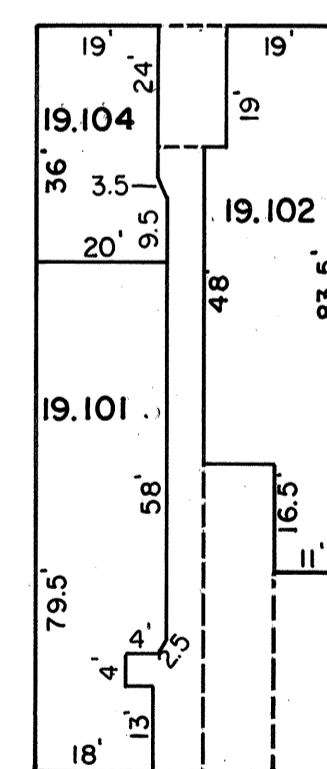


SECOND FLOOR

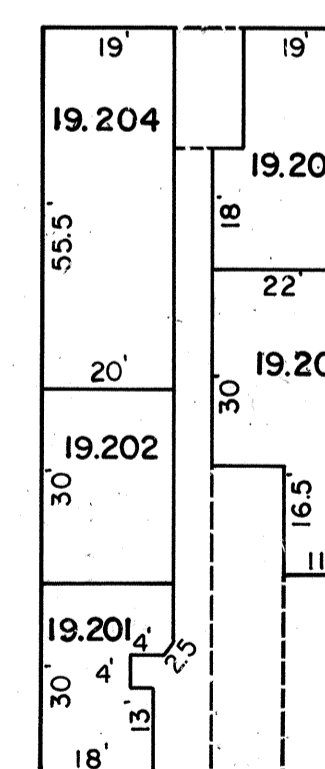


THIRD FLOOR

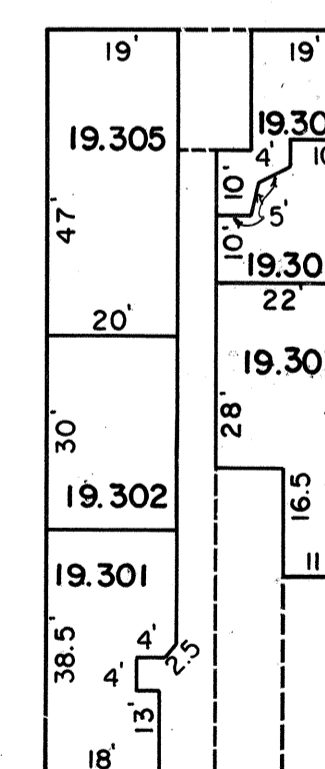
SITHENS BUILDING - NORTH, A CONDOMINIUM



FIRST FLOOR



SECOND FLOOR



THIRD FLOOR

THE RIDGEWOOD PROFESSIONAL CENTER CONDOMINIUM

NEW JERSEY DEPARTMENT OF TREASURY
 DIVISION OF REVENUE
 RECEIPTS ADMINISTRATION
 APPROVED AS A TAX MAP SUBJECT TO THE
 PROVISIONS OF CHAPTER 122, LEGIS. STAT., 1992,
 FOR THE DIRECTOR, DIVISION OF REVENUE
 BY *Jan. Halpin, P.E. S.E.*
 LIC. # 15434 MANAGER, ANALYSIS SECTION
 DATE: JUL 8 1992 SERIAL NO. 941

TAX MAP
 VILLAGE OF RIDGEWOOD
 BERGEN COUNTY N.J.
 DANIEL M. DUNN L.S. 33098
 DATE: OCTOBER 1, 1990
 SCALE: 1" = 30'