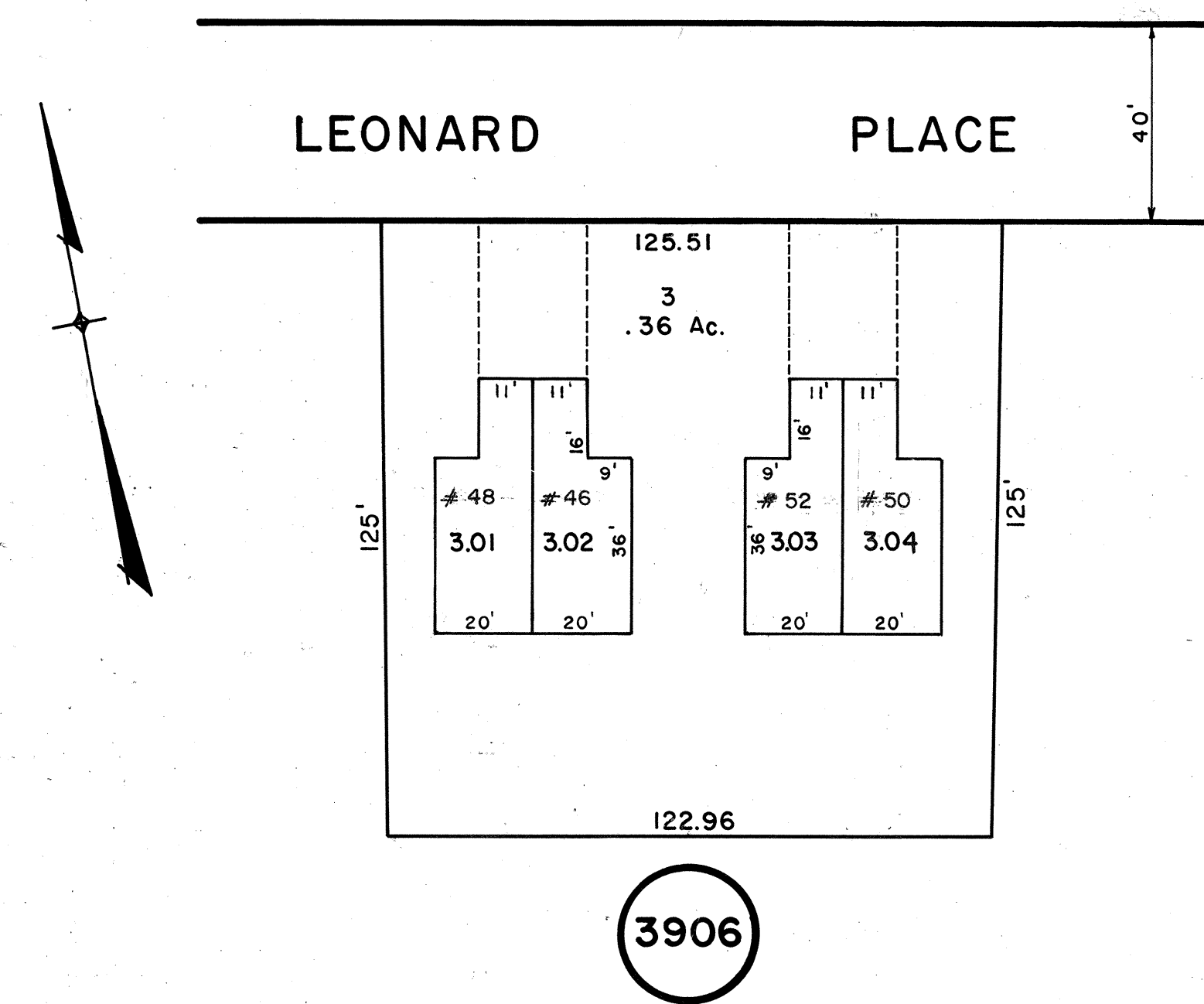
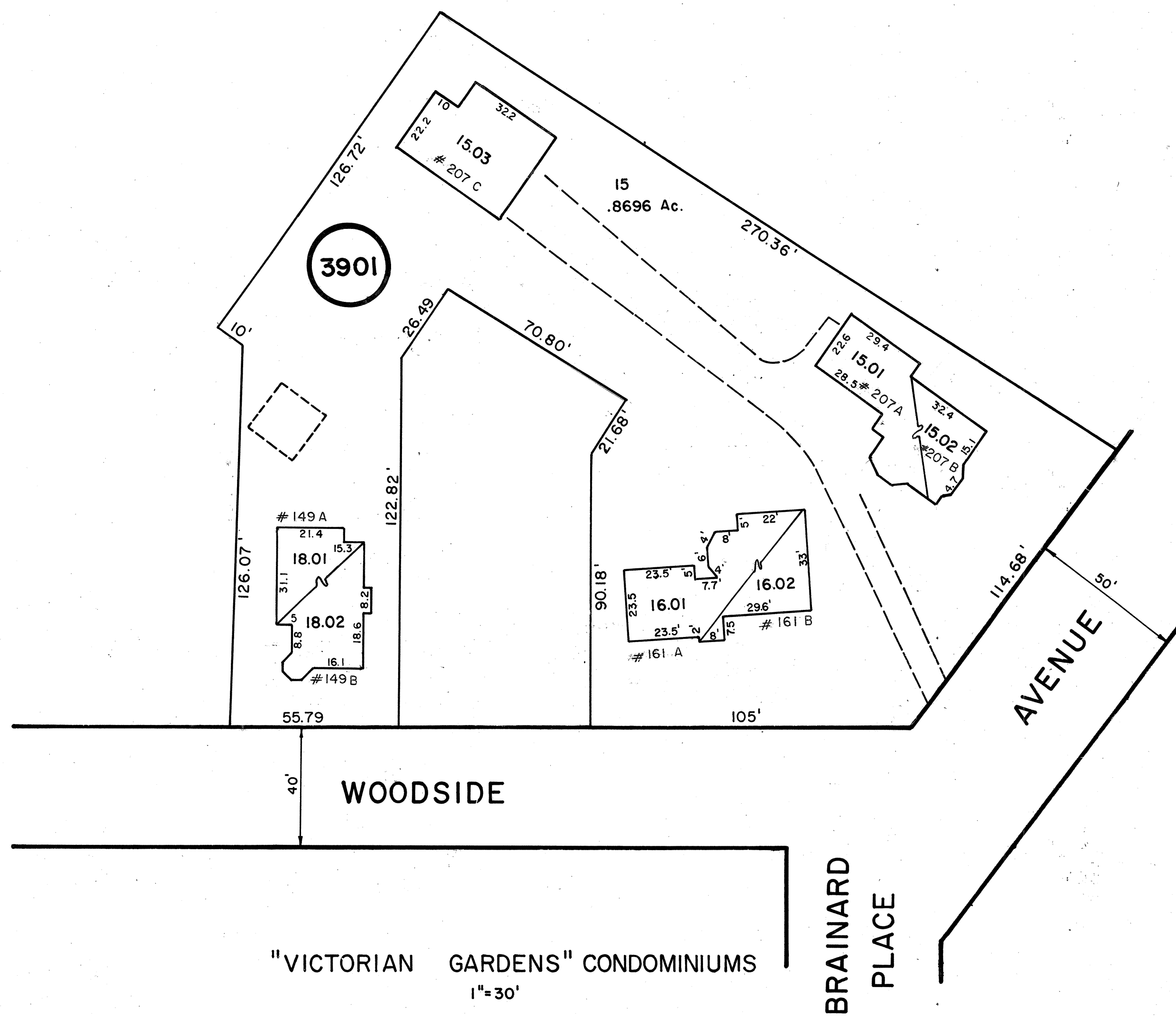


"BROADWOOD" CONDOMINIUMS
1"= 30'



"WOODSIDE GARDENS" CONDOMINIUMS
1"= 30'



"VICTORIAN GARDENS" CONDOMINIUMS
1"= 30'

FIRST FLOOR UNITS ARE INDICATED BY ODD SUFFIXES
SECOND FLOOR UNITS ARE INDICATED BY EVEN SUFFIXES

NEW JERSEY DEPARTMENT OF TREASURY
DIVISION OF TAXATION
PROPERTY REASSESSMENT
APPLIED AS A UNIT AND SUBJECT TO THE
PROVISIONS OF CHAPTER 125, LAWS OF 1983, AND
FOR THE DIRECTOR, DIVISION OF TAXATION
BY *[Signature]*
ZEC # 35434
DATE: JUL 8 1992

TAX MAP
VILLAGE OF RIDGEWOOD
BERGEN COUNTY N.J.
DANIEL M. DUNN L.S. 33098
DATE OCTOBER 1, 1990
SCALE: AS SHOWN